



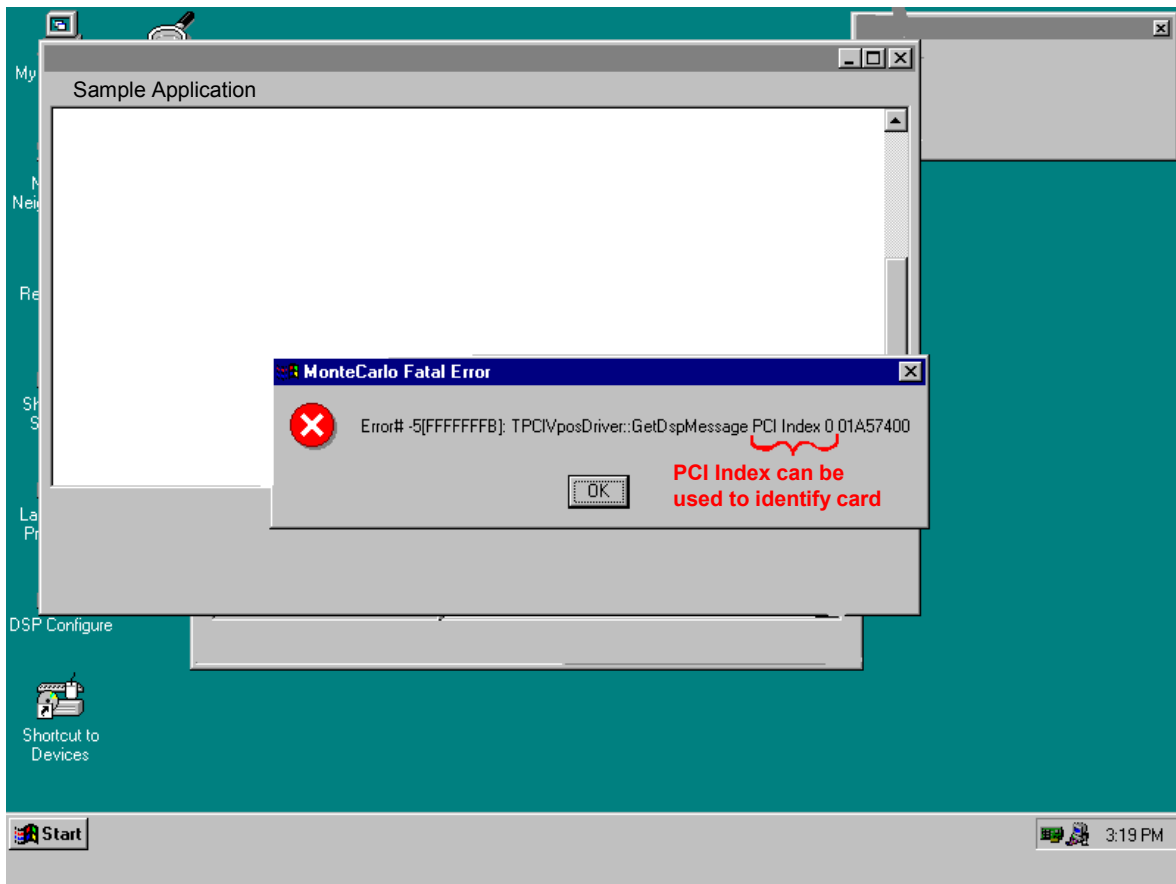
# TECHNICAL BULLETIN # 108

## Identifying PCI cards exhibiting VPOS errors

PIKA Technologies Inc., 20 Cope Drive, Kanata, Ontario, Canada, K2M 2V8 Ph: +1 (613) 591-1555 Fax: +1 (613) 591-9295

- Date Issued:** Oct 18, 2001
- Software Version:** MonteCarlo versions prior to 5.5.7.24
- Product(s):** All PCI products
- Purpose:** Describes how to identify the specific card reporting a VPOS error using information provided in the VPOS error message box.

The PCI Index number displayed in the 'MonteCarlo Fatal Error' message box identifies the card that reported the error. In the example below, card 0 reported the error (indicated by "PCI Index 0").



To identify the serial number of this card, you can view the list of cards in MCSetup. The cards appear in order from top to bottom, with card 0 being at the top. Using the serial number found, the card can be identified in the chassis. It should be noted that the order in which the cards are listed in MCSetup is not necessarily an indication of the card order within the chassis. The card order in the PC chassis may vary between manufacturers due to PCI slot numbering differences. Always use the serial number as confirmation that you have identified the correct card.